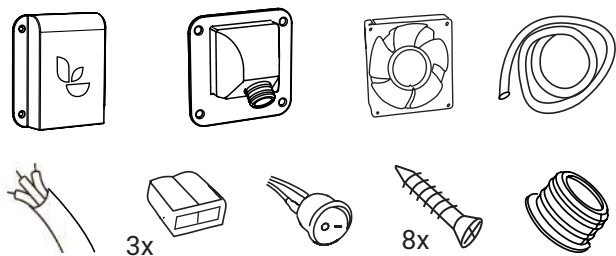


Lüfterset

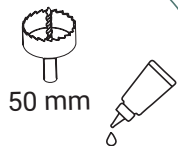
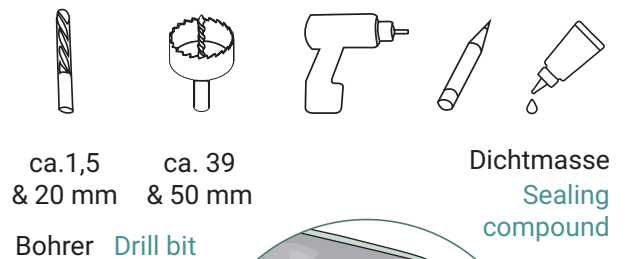
# Montageanleitung

Fan Set Assembly Instruction

**Du bekommst** You got



**Du benötigst** You need



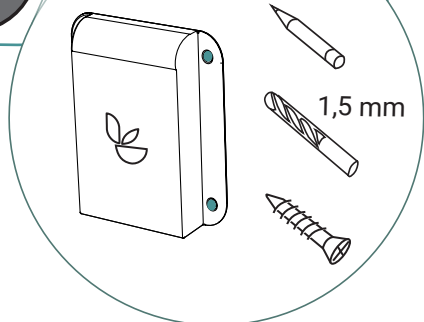
50 mm

**Außen** Outside

Dichte das Loch und das Gehäuse (Fuge Innenseite) mit Dichtmasse ab.

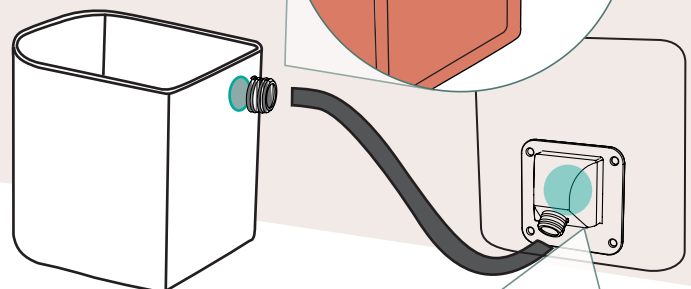
Seal wall hole and fan case (joint inside) with sealing compound.

4x



1,5 mm

**Innen** Inside

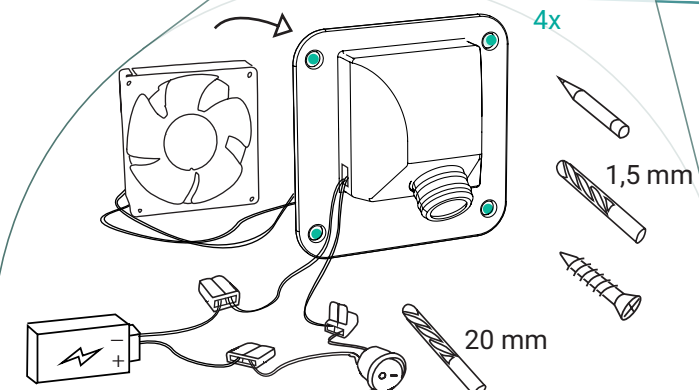


39 mm

Das Bohrloch in der Trelinowand sollte sich idealerweise oberhalb des Feststoffeimers befinden. Bei dem Modell Origin wird es zudem mindestens 35 mm unterhalb der oberen Korpuskante positioniert.

The drill hole in the corpus of your Trelino should be located above the solids bucket. In the model Origin, it is also positioned at least 35 mm below the top edge of the cabinet.

4x



1,5 mm

20 mm